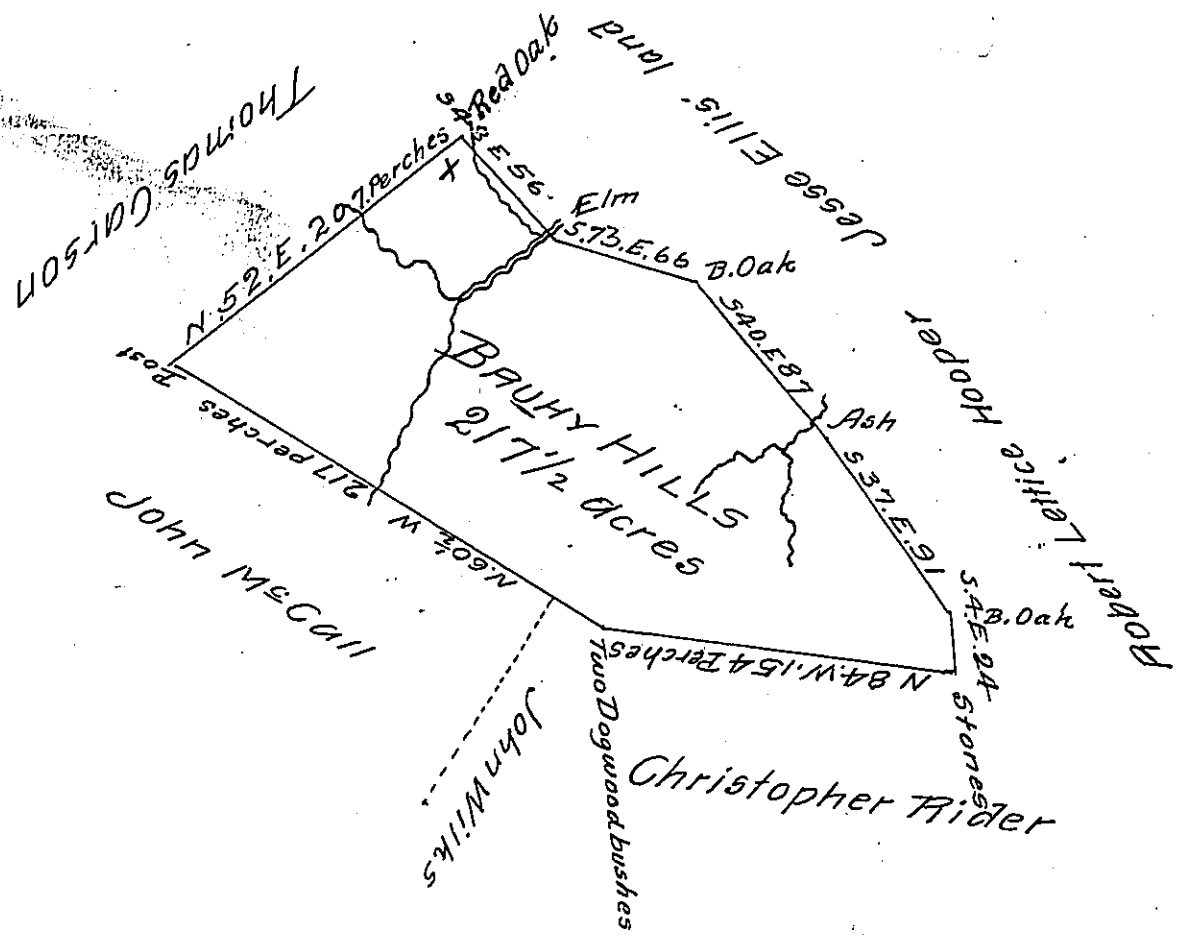


FORM NO. 1.



A Draught of a tract of land situated on the waters of Maple Creek in Washington County called "Brushy Hills" containing Two hundred and seventeen acres & a half and six per cent allowance. Surveyed August the 17th 1797 in pursuance of a Warrant granted to Silas Young for 200 acres dated January the 16th 1797.

Thomas Stokely D.S.

Daniel Brodhead Esquire

Surveyor General of Penns^a

I do hereby certify that I have examined the above & find it to be made correctly. Given under my hand this 1st day of September 1801

Jonathan Leet D.S.

To Samuel Cochran Esq. Surveyor General

W. O.

IN TESTIMONY that the above is a copy of the original remaining on file in the Department of Internal Affairs of Pennsylvania, made conformably to an Act of Assembly approved the 16th day of February 1833, I have hereunto set my hand and caused the Seal of said Department to be affixed at Harrisburg, this sixteenth day of August 1907

Henry Howell
Secretary of Internal Affairs.